

Giving Innovation to the world,



THE LEADING JAPAN FOUNDRIES

www.japan-foundries.com



www.japan-foundries.com

www.japan-foundries.com

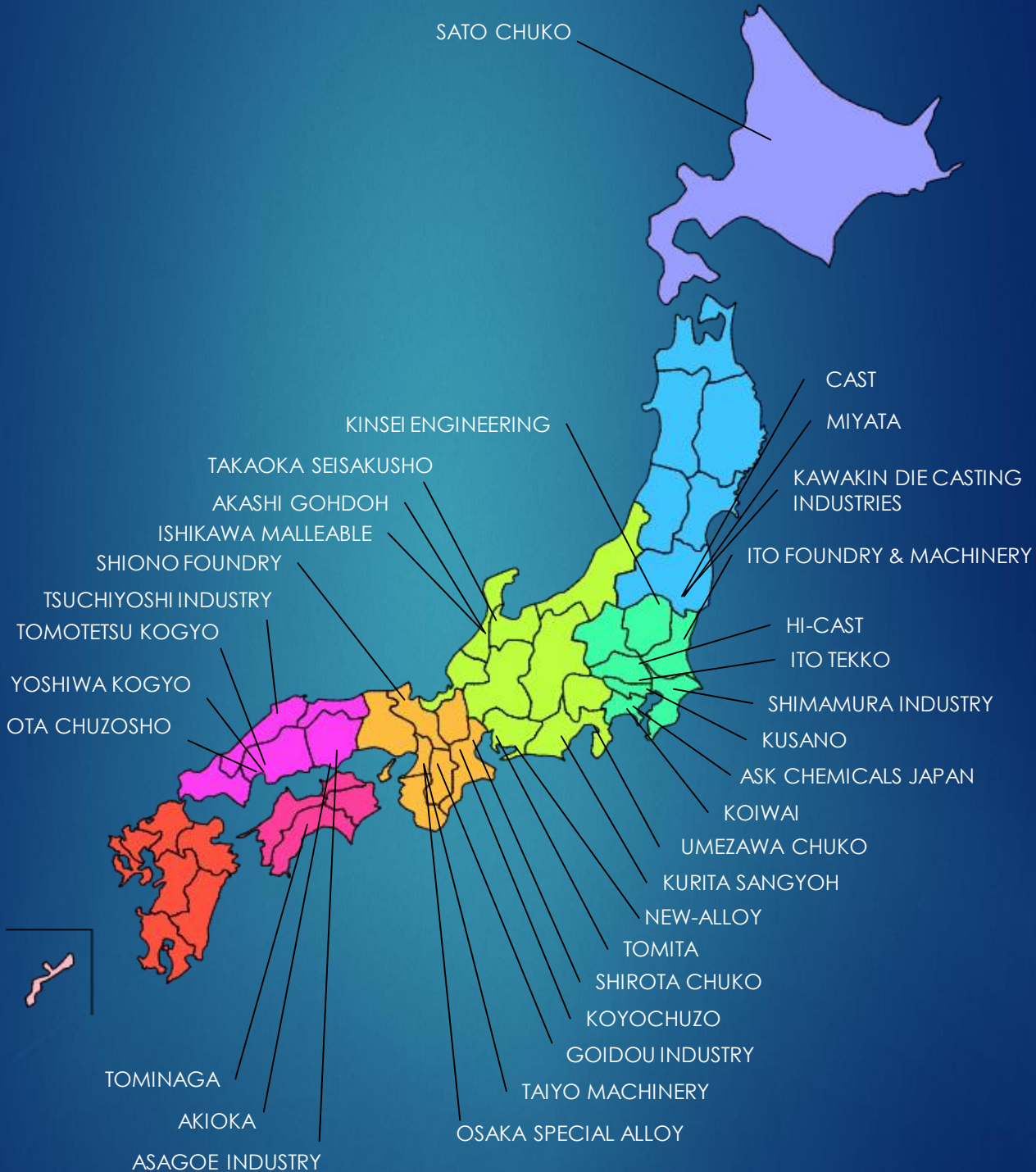
info@japan-foundries.com



Companies Location

Giving Innovations to the world, The Leading Japan Foundries.

www.japan-foundries.com



What is THE LEADING JAPAN FOUNDRIES

Japanese foundries have excellent casting technology and produce high-quality castings in the world. Especially "THE LEADING JAPAN FOUNDRIES" is composed of 33 companies that possess advanced technologies and is a cutting-edge group to expand the sales network aggressively aiming at the global market.

We can supply various kinds of castings of iron, aluminum alloy (including composite) and copper alloy from 0.1 kg to 15 ton, and respond from mass production to low-volume production.

We are comprised of professionals of the top-level in the casting industry and able to supply stably high-quality castings. And we give all customers quick and efficient responses on estimates, orders and any other correspondence. We are well-experienced in the international business with global manufacturers.

Giving Innovations to the world, The Leading Japan Foundries.



We can supply foundry parts of various industries.



We can supply various kinds of materials.

FC (Gray Iron)	GRAY IRON
FCD (Ductile iron)	DUCTILE IRON
Steel Casting	STEEL CASTING
Aluminium Alloy	ALUMINIUM ALLOY
Copper Alloy	COPPER ALLOY
Others	OTHERS

We are CASTING SAMURAI



Please visit the 2020 Tokyo Olympics and visit our factory.



Exhibit at NEWCAST

THE LEADING JAPAN FOUNDRIES Exhibit at NEWCAST/GIFA 25-29 June 2019, Düsseldorf, Germany.

www.newcast.com



THE LEADING JAPAN FOUNDRIES will be represented at NEWCAST in 2019 with 33 companies from the area of metal casting related technologies. You are welcome to meet us at our booth.

Please visit booth of THE LEADING JAPAN FOUNDRIES, Hall 14 F54 of NEWCAST.



We are in **NEWCAST**
Booth number:
HALL 14 F54

Ishikawa Malleable CO.,LTD www.ishikawakatan.co.jp

I have delivered the automobile and fittings, railway vehicle parts to customers. Also is provided with a production base in China from '94

To Japan, China, Europe, the US, and customers to Southeast Asia also I have delivered the product.

Casting from the mold production, exerts a comprehensive strength due to the up to machining,

It is, we believe that is our mission to provide products that meet the needs quickly.



West Factory

East Factory

Office

Auto parts







Balance Shaft Bearing cap Pressure plate Body Suspension Control

Other parts








Filter case Exhaust manifold Valve Part Railroad vehicle brake parts Cylinder liner

Company	Ishikawa Malleable Co.,Ltd
Address	9 I,Uke,Kahoku-Shi,Ishikawa, 929-1121 Japan
URL	www.ishikawakatan.co.jp
Email	info@ishikawakatan.co.jp

Automobile General Industrial Machinery Utility Infrastructure Others GRAY IRON DUCTILE IRON






Kawakin Die Casting Industries Co., Ltd.

Kawakin Die Casting Industries Co., Ltd. info@kawakindc.co.jp www.kawakindc.co.jp

Founded in 1934, we have consolidated ourselves as specialist to aluminum die casting. Using our refined skills we have acquired through our long history, we are aggressively challenging ourselves with new endeavors such as establishing ourselves in the field of semi-solids, and conducting research on environmental protection through improvements of our products and manufacturing methods.

Aluminum Alloy Die Cast Part Manufacturing

What is die casting.

Die casting defines both the skill and product derived from precision molds (die) where melted non-iron alloy is pressure cast (casting) to instantly create a form. Because it can mass produce complex shapes and sizes, it is being utilized in various fields.



- ▶ motor vehicles
- ▶ motor cycles
- ▶ outboard motor
- ▶ industrial equipment

Nanocast

Compared with conventional semi-solid die casting technology, nanocast has features of high quality, high operation, low cost and small space.



Company	KAWAKIN DIE CASTING INDUSTRIES CO., LTD
Address	15 Jinba Shirasaka, Shirakawa-shi, Fukushima, Japan
URL	www.kawakindc.co.jp
Email	info@kawakindc.co.jp

Automobile General Industrial Machinery Construction Machines Ship ALUMINIUM ALLOY DIE CASTING







KOIWAI

Additive Manufacturing

planning@tc-koiwai.co.jp
www.tc-koiwai.co.jp



KOIWAI is a pioneer in «3D printing MONODUKURI» casting and metal additive manufacturing in JAPAN.

- ☑ **Prototype (Headquarters)**
High speed & quality casting by 3D sand casting
- ☑ **Mass Production (Miyagi Plant)**
Quick mass production launching from trial to production, Small-lot multi-production, Casting of complicated shape such as “double layer pipe structure” gravity casting by mold.
- ☑ **Overseas (KOIWAI INDIA)**
Established in 2012, Planning to start manufacturing in 2019. 3D casting, Die casting, Tooling etc.
- ☑ **Tooling shop (AOKI Co., Ltd.)**
Established in 1948, Various type of machining of prototype and mass production casting
- ☑ **AM (JAMPT CORPORATION)**
The first service bureau in Japan that is capable of providing Comprehensive services in the field of metal AM, handling everything from powder development to manufacturing of prototyping and mass production needs.



Company	Koiwai Co., Ltd.
Address	244-6 haneo, Odawara-shi, Kanagawa 256 0804 JAPAN
Established	April, 1973
CSR	JIS Q 9100, ISO 9001, ECO STAGE

Automobile

General Industrial Machinery

Construction Machines

Robot

Ship

Others

GRAY IRON

DUCTILE IRON

STEEL CASTING

ALUMINIUM ALLOY

COPPER ALLOY

OTHERS



MIYATA CO.,LTD.

miyata.ec-net.jp



We strive to meet current standards in a flexible fashion, and can handle the entire process from the melting of metal to actual distribution. We strictly enforce quality, distribution, and schedule to meet our client orders.

- Automobile: engine, brake, steering, and other functional components
- Air conditioning: air conditioner, cooling system, and other air pressure devices
- Generator: generators for 4-wheel, 2-wheel, agricultural and construction machinery
- Printer: Industrial large-sized printing machinery
- Miyata features casting parts used in machinery used in people's everyday life.



Company	MIYATA Co., Ltd.
Address	8-1 Yamagamiyama, Izumizaki, Izumizaki-mura Nishishirakawa-gun, Fukushima, 969-0101 Japan
URL	miyata.ec-net.jp
Email	miyata@fancy.ocn.ne.jp



Automobile

General Industrial Machinery

Others

GRAY IRON



SATO CHUKO Co.,Ltd.

We are a casting manufacturer aiming to contribute to society by providing high-quality castings and to obtain social trust by helping to activate the local community.

Production materials : Plain cast iron and ductile cast iron

www.satochuko.co.jp

Cast-iron car parts



Case Differential
Exhaust Manifold
Flywheel
Oil Pan
Water Pump
Others

Cast-iron parts for industrial machine & agricultural machinery



Elevator Pulley
Cover-gear
Shaft Others



Company	SATO CHUKO Co.,Ltd.
Address	356Moseushicho,Uryugun,Hokkaido, 079-0502 Japan
URL	www.satochuko.co.jp
Email	info@satochuko.co.jp



TAKAOKA SEISAKUSHO CO.,LTD. <http://www.takaoka-ss.co.jp>

We want to satisfy our customers with top quality and with the best products we have to offer. This is our wish. To realize this, We consider as the concept of Takaoka Seisakusho that " Heartfulness & Technology " is important for casting. By fusion of casting technology that we cultivated since the foundation of 1942 and latest facilities, we have engaged in many difficult products of high technological requirement, strict dimension accuracy and so on. Our staff will make every effort and provide the utmost service to supply high reliable products.



Casting the part of the control valve

Applications: As a control valve for the forklift, and has been used in a variety of models.We cast complicated oil pressure circuit.
Casting Material: FC250



Casting part of hydraulic gear pump

Applications: industrial vehicles, construction machinery, agricultural machinery, as a hydraulic source, such as a specially equipped vehicles,It has been used in a wide range of fields of society.society.We cast the body of this part.
Casting Material: FCV350



Casting part of Hydro-Static Transmission

Applications: It is the static oil pressure continuously variable transmission which incorporated a hydraulic pump and a hydraulic motor in one housing.Vehicle speed as the car can be selected freely.It is put on an agricultural machine in the country, Europe and America, Asia and receives the evaluation that is high in performance, quality together until now.society. We cast the body of this part.
Casting Material: FCV350~410



Casting part of turbo charger

Applications: turbo charger in forcibly apparatus feeds air to the engine. This is a device that allows a larger engine output. Widely used from for light car to for large buses and trucks. We cast the turbine housing which held the unevenness of the shape of a complicated gas course about performance in check.
Casting Material: HISIFCD



Company	TAKAOKA SEISAKUSHO CO.,LTD
Address	123-14, YOKKAICHI, TAKAOKA-CITY TOYAMA, JAPAN
URL	www.takaoka-ss.co.jp
Email	imono@takaoka-ss.co.jp



YOSHIWA KOGYO

Working Together for a Better Future

YOSHIWA KOGYO Co.,Ltd. is always trying to achieve "a better future" and aims to be "an attractive corporation"
We develop a product that can meet customer's needs, deliver it just on times, and contribute to the car production of rich sensibility. In addition, we create an open working environment where all working members can express themselves freely. And our main aim is to be a company that can bring happiness and joy to the people around us by achieving our continuous development.



Muikaichi Factory



Hatsumi Factory



Company	YOSHIWA KOGYO Co.,Ltd.
Address	1-48 Myojinmachi Kaita Aki Hiroshima, Japan 736-0056
URL	http://www.yoshiwa.co.jp/
Email	info@yoshiwa.co.jp

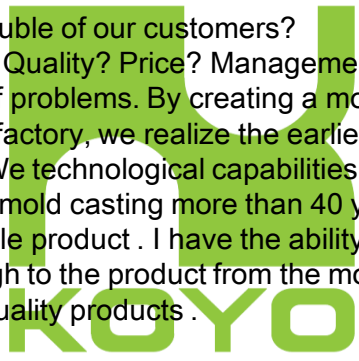


KOYO CHUZO CO.,LTD

KOYO CHUZO CO.,LTD

Form Your Dreams

What is the trouble of our customers?
Delivery time? Quality? Price? Management? I think there are a variety of problems. By creating a model of the product in the factory, we realize the earliest delivery date and low cost. We technological capabilities that have been developed full mold casting more than 40 years, we will deliver a reliable product. I have the ability to manage the process through to the product from the model. So, we provide high quality products.



www.koyochuzo.co.jp

info@koyochuzo.co.jp
www.koyochuzo.co.jp



Company	KOYO CHUZO CO.,LTD
Address	Niside 2624 Yono Iga-City, Mie JAPAN
URL	http://www.koyochuzo.co.jp
Email	H.shirae@koyochuzo.co.jp





OTA CHUZOSHO was founded in 1923. 96 years have passed in this year. Attracted to the technical skill cultivated through the long years, still many young people work here. Rather than casting only, machining, assembly and we have sheet metal factory as subsidiary company. It allows you to produce a combination product of castings and sheet metal products. Now also we try to make an added value and creation more.

Manufacture parts : ①Printing machine ②ship ③coke oven
④molding machine ⑤machine tool

Material : FC, FCD, FCH, Ni-Resist

We can make from 1 piece even a trial product by hand molding.



Company	OTA CHUZOSHO CO.,LTD.
Address	3-23, Kamitenma Nishiku Hiroshima, 733-0021 JAPAN
URL	www.ohdachuzousyo.co.jp
Email	info@ohdachuzousyo.co.jp

We also have casting and machining factory in Thailand.

We can manufacture smaller products than OTA CHUZOSHO (50kg~5 t).



Shimamura industry Co., LTD.



SHIMAMURA INDUSTRY Co., LTD.

www.Shimamura-industry.com



Our company declare that **“Cast iron products with heart and soul”**. We will sincerely support growth of worldwide customers by manufacturing using of reliable technology we have refined for a long experience.

Our Products

<p>Injection Molding Machine</p>	<p>Die Casting Machine</p>	<p>Compressor</p>	<p>Elevator</p>
			<p>Thermal Power Generation</p>



Company	Shimamura Industry Co., LTD
Address	2043-11, Ota, Sakura-city, Chiba, 285-0808, Japan
URL	www.shimamura-industry.com
Email	Info_shimamura@shimamura-industry.com





We believe that Shiono Foundry's business is "manufacturing for manufacturing," we manufacture casting machinery parts that support social manufacturing, such as water pipes, elevator parts, construction heavy machinery, etc.



Item name	Textile machine parts case	Use	Winder for synthetic fiber
Material	FC 250	Weight	340 kg
Outer dimensions	1130 × 400 × 760	Frame inside dimension	720 × 1030 × 750
Painting	Base paint	Core	Present



Item name	Transport device parts pulley	Use	Stage device pulley
Material	FC 300	Weight	20 kg
Outer dimensions	φ 340 × 60	Frame inside dimension	530 × 530 × 300
Painting	None	Core	None



Item name	Pump component casing	Use	Pump for marine engines
Material	FC 200	Weight	160 kg
Outer dimensions	870 × 630 × 480	Frame inside dimension	900 × 1250 × 720
Painting	Anti-rust oil	Core	Present



Item name	Transport Equipment Part Gear	Use	Hoist crane
Material	FC 200	Weight	50 kg
Outer dimensions	φ 425 × 280	Frame inside dimension	600 × 600 × 600
Painting	None	Core	Present



Company	Shiono Foundry Co., Ltd.
Address	1917-1, Kanaya, Yosano-cho, Yosa-gun, Kyoto Prefecture
URL	http://www.shiono-cast.com/
Email	info@shiono-cast.com

General Industrial Machinery Construction Machines Others

GRAY IRON DUCTILE IRON

TOMINAGA CO.,LTD.



www.ftm-tominaga.co.jp

We respond to the needs people, technology, facilities. Technical group, TOMINAGA (since 1959)

The product with the high quality and service are offered.

(Casting) Maximum mold size 2000×2000×1000mm about. Up to 2500kg weight about.

(technology) From casting to machining finished product supported through the high technology over half a century.



Dredging Equipment casting

This is a turning drum. The material I has been produced in a special component of the FC250. Magnitude There outer diameter of about 1500mm.



Gas turbine casting.

This will be the housing for gas turbine for power generation. Material is FCD450, but products that are produced by clearing the strict testing standards.



Machine tool parts casting.

This will be the base casting of machine tools. Material is FC250. Performs a stress relief by heat treatment, we are finished with a rust paint.



Main Factory



tomineko

Company	TOMINAGA Co.,Ltd.
Address	3981-5 Nunoshida Kochi-city Kochi-pref. Japan
URL	www.ftm-tominaga.co.jp
Email	info@ftm-tominaga.co.jp

General Industrial Machinery Construction Machines Robot Ship Utility Infrastructure Others

GRAY IRON DUCTILE IRON



TOMITA CO., LTD

www.tomichu.co.jp

Tomita Co.,Ltd is the foundry that uses both Wooden Pattern and Full Mold Process. It has the capacity to produce approximately 800 tons of high quality iron casting per month. Presently, it consists of three factories that perform and ensure quality control of pattern making, casting, and machining services. The foundry has the ability to produce various casting from 100 kg to 10 tons. It is also capable to corresponds mass production to single order through their flexible production system. "With our Integrity and Technology", we are able to supply high quality casting products and reliable services all over the world.

● Wooden Pattern Process

Elevator Castings, Construction Machinery Castings, Printer Castings, Injection Molding Machines Castings, Counterweight
The Feature: Brinell Hardness 420HB (Elevator Sheave)



● Full Mold Process(FMC)

Stamping Die, Machine Tool Castings, Injection Molding Machines Castings
The Feature: Maximum Flask Size 5000×2600



Company	TOMITA CO., Ltd
Address	31-4 Kanen, Yatomi-shi, Aichi, Japan
URL	www.tomichu.co.jp
Email	tomitass@eagle.ocn.ne.jp



UMEZAWA CHUKO Co.,Ltd.

UMEZAWA CHUKO Co.,Ltd.

info@umecyu.co.jp
 www.umecyu.co.jp/en



Our company has a history of 71 years. As a feature, it is possible to incorporate castings of 10 kg to 3,000 kg into various small lot products. It also supports both a foam model and a wooden model. In 2014, we founded foundries in Thailand. Our company can support customers in the network of Japan and Thailand.



Industrial machine parts

We mainly manufacture papermaking machine parts and machine parts of many kinds.



Steelmaking plant parts

Maintenance parts of the plant factory are manufactured in short delivery time by casting from a foam model.



Press mold parts

Press dies for automobiles and motorcycles are available from casting to machining.



Thai factory

The Thailand factory produces large castings. Major products are mold parts, machine tool parts,

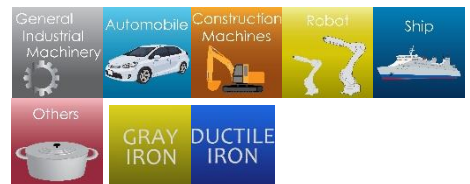


Japan Factory



Thai Factory

Company	UMEZAWA CHUKO Co.,Ltd.
Address	2608-48 Nakazato Fuji-city Shizuoka 417-0826 Japan
URL	www.umecyu.co.jp
Email	info@umecyu.co.jp





Innovation has always been central to Akashi's corporate philosophy, from the development of bimetal parts for the hydraulic and construction equipment industries in the '70s, to the recent discovery of Pearlite Bronze, a remarkable lead-free bronze that has come to the rescue of numerous industries struggling to find a lead-free solution with the necessary sliding properties. Innovation has made it possible to complete our corporate philosophy— by providing satisfying solutions to our customers, by nurturing and bettering the lives of our employees, and by becoming a strong, well-rounded and responsible corporate entity.

Bronze Castings



Akashi Gohdoh bronze castings are used in a variety of applications due to their resistance to corrosion and wear, as well as their high electrical conductivity. We are well known in our field for our ability to cast problematic shapes with complicated core arrays.

Bimetal Parts for Hydraulic Pumps & Motors



AG Bimetal is produced by casting molten bronze onto ferrous metals. When this is performed on a high-strength material such as steel, a high-performance bearing capability is added, making it a perfect composite material for certain applications. Now available with our lead-free Pearlite Bronze!



Company	Akashi Gohdoh Inc.
Address	1484 Yokoemachi Hakusan, Ishikawa, Japan
URL	www.akashigo.com
Email	richard@akashigo.com



Our company has been doing specialized casting since 1966. Although our central focus has been construction machinery, we are able to produce hydraulic equipment, industrial equipment, robotic apparatus, parts for ships and valves as well.

We are able to produce materials of various sizes and production quantities. We produce products ranging 1kg to 100kg in two automatic molding lines. Products ranging from 100kg to 1,000kg are produced in a furan self-hardening line.

We are committed to not only meeting our customers' needs, but ensuring their satisfaction through our ongoing efforts to continually develop higher technology, skills and quality.

(I) Construction machinery



We supply products like underbody components, hydraulic equipment, reduction gear and swing bracket for equipment used in infrastructure development, building and public construction. We supply these essential components to companies across Japan.

(II) Overhead Cranes



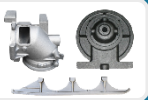
We supply cast crane products, such as hoist drums, roller wheels, and gear wheels of overhead and bridge cranes.

(III) Robotics



We employ high level technology and skills to produce castings of specific dimensions and Complex shapes for body and base frame components of assembly and welding robots.

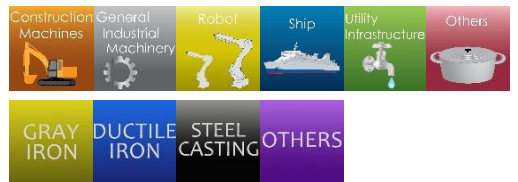
(IV) Agricultural machinery, Marine Vessel, etc.



We are engaged in producing parts for equipment used in various industries, such as tractors, combines, and marine vessels. We are proud to be able to provide quality casting to customers in a wide range of industries, all over the world.



Company	AKIOKA.Co.,Ltd.
Address	8252-35 Otoshima Tamashima Kurashiki city Okayama Pref 713-8103 Japan
URL	www.akioka1966.co.jp
Email	(Please contact us from our website.)



ASAGOE

ASAGOE INDUSTRY CO., LTD.
<http://www.asagoe-net.co.jp/en>

When you look for the **casting** and **machining** material of **Hydraulic components** as Control valves, Pump cases, Motor cases and Internal components, you have to contact us. **We will definitely satisfy you !!**

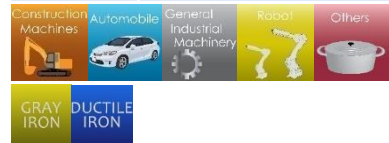
Our foundries and machining plants



1. Headquarters (foundry)
2. 1st Machining plant
3. MITSU foundry
4. 2nd Machining plant(MITSU)
5. 3rd Machining plant

All of them have acquired ISO 9001 and 14001 certification. Casting capacity of our foundries and our partner companies is about **4000tons per month.**

	ASAGOE INDUSTRY CO.,LTD
Address	120-28 Mitsutakadu, Kitaku, Okayama-city, Okayama, Japan
URL	www.asagoe-net.co.jp/en
Email	access@asagoe-net.co.jp



Hydraulic component for Construction machinery, Agricultural machinery, and etc..

- These are materials of Control valves, Pump cases, Motor cases, Cylinders, etc.
 - These are used as hydraulic component parts for excavator, crane, and etc. This kind of product has a lot of holes with complicated for passing oil with high pressure. In these market, You can get high quality things, reduce your cost in total manufacturing, and save time. We already have a big market share in the world.



Automobile Brake parts

- Wheel cylinder for automobile drum brake. Automobile brake parts are one of the most important and critical items. Critical items are required very high quality and keeping quality for long time. We have provided them to Japanese brake maker for 40 years. These are mounted in the car or truck, and have been exported to all over the world.

ITO FOUNDRY & MACHINERY CO.,LTD.



ITO FOUNDRY & MACHINERY CO.,LTD.
www.itofound.co.jp mail : master@itofound.co.jp

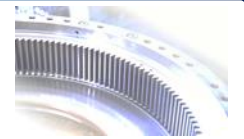
Construction Machine



Casting



Machining



Railway vehicle



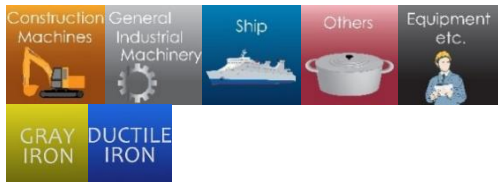
Motor Frame for Train

Ships



Marine Winch

Company	ITO FOUNDRY & MACHINERY CO.,LTD.
Address	3129-43 Muramatsu,Tokai-mura,Naka-gun, Ibaraki 319-1112,Japan
URL	www.itofound.co.jp
Email	master@itofound.co.jp



Industrial Machine



Buckhead

Drum

CASE for Pump

We've been provide integrated production for casting and machinery even modeling the casting pattern.



We support Japan's manufacturing business through the manufacturing of Sokeizai (castings). With 130 years of history, our refined skills and newest IT allow us to consistently manufacture [50kg to 4,000kg] of castings. With our clean facilities and talented technical capabilities staff, we are creating a path towards a brighter future.

Robotic Part Castings



• Robotics are involved in various processes, from putting together cars to lifting, spot welding and more. We produce the casting that is used for robotic arms and bodies, as well as the bases. Many of the casting s are hollow, but are generally not too thick. With thickness needing to vary, a lot of high-level techniques have been employed for production.

Construction Machinery Castings



• A vibratory compactor is a machine that compacts (rolls over) dirt, sand and asphalt. It is often used in narrow locations such as walkways and for plumbing. We produce the most important rolling part of this machine. This part requires smoothness when touching the surface despite the vibration, so toughness of the part is also required.

Ship engine parts Castings / truck axle parts Castings



• We mass-produce water cooled exhaust manifold of marine engine and casting of axle parts of truck. Both are very complex shapes and become important items, so advanced technology, quality, and stable quantity are required.

Electronic parts machine Casting/ machine tool Casting



• Surface mounters are equipped with electronic components such as ICs on printed circuit boards such as home appliances such as mobile phones and personal computers, and automobile industrial products. We mass-produce frame castings of such machine tool castings and machining centers such as machining centers. These cast products are complicated in form and require high precision castings.

Shirakawa Factory



Company	CAST Co., Ltd.
Address	2 Sasakubo, Higashikaminodejima, Shirakawa-shi, Fukushima, 961-0302 Japan
URL	www.kkcast.co.jp
Email	info@kkcast.co.jp



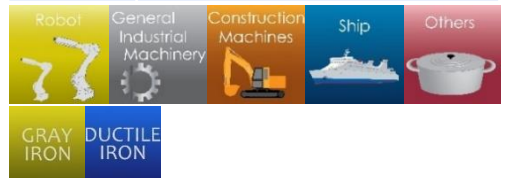
Our foundry was established in 1890. The main cast items are parts for injection molding machine parts, industrial robot parts, machine tool parts. Casting material is gray cast iron and ductile cast iron. And weight for our cast is 50kg ~ 6,000kg. We always strive to improve the quality, aim to be a company that satisfy customers.

Our products for

- Injection molding machine parts
- Industrial robot parts
- The others



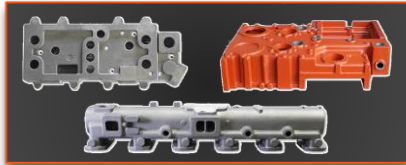
Company	Kurita sangyoh co.,Ltd
Address	3-6 toyoharacho surugaku shizuoka-shi shizuoka 422-8071 japan
URL	www.kuritasangyoh.co.jp
Email	info@kuritasangyoh.co.jp



GID GOIDOU INDUSTRY CO., LTD

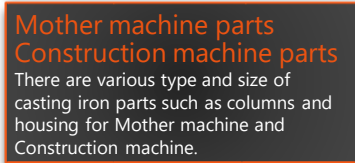
Superior products produced with enough experience and high technology

More than 1300 years have already passed since we had started our business in Nara, ancient capital of Japan. We are trying to combine our long year experience and high technology to provide superior casting iron product.



Engine Parts

Engine parts for marine vessels are used in severe environment and situation.

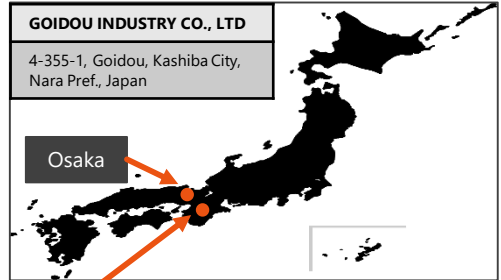


Grade	FC250 - FC300 , FCD450 - FCD600
Original Grade	Heat-Resistant Casting Iron
Weight	5kg - 1000kg
Minimum Order Quantity	3pcs
Maximum	200pcs/month

info@goidou.jp
<https://www.goidou.jp/>

GOIDOU INDUSTRY CO., LTD

4-355-1, Goidou, Kashiba City, Nara Pref., Japan



TOMOTETSU Kogyo Co.,Ltd.

TOMOTETSU Kogyo Co., Ltd.

teru@tomotetsu.jp
www.tomotetu.co.jp/



TOMOTETSU is a 「form & sharp making」 specialist manufacture.

We make cast-iron dies and molds for automobiles as well as frames for industrial machinery, surface plates, manhole covers for drains & sewers. Monthly output of 1,000 tonnes and above.

We pride ourselves on the Japanese spirit of 「Manufacturing improvement through human resource development」.



Artistic Color Manhole



Company	TOMOTETSU Kogyo Co.,Ltd.
Address	6151-1 imuro Asa-cho Asakita-ku Hiroshima-city Japan 731-1142
URL	www.tomotetu.co.jp/
Email	teru@tomotetsu.jp





★ Thickness 3mm !
Pizza kiln "GGG" made of the cast iron
★ We are looking for distributors !

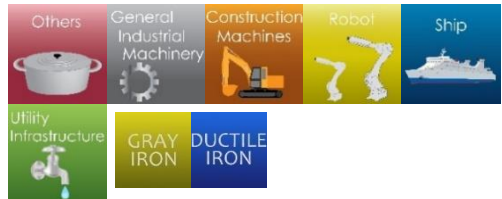
GGG



Usually we are casting
important security parts such as railway parts.



Company	HI-CAST Co.,Ltd.
Address	2-705-34 Komatudai Hanyu-shi Saitama-ken 348-0038 Japan
URL	www.hicast.jp
Email	info@hicast.jp



Since foundation in 1931 our cast iron products with high added-value have been brought to the world giving shapes to the ideas making advantage of our highly brushed-up technologies. We would further devote ourselves to find out new possibilities of castings with various try-and-error efforts in future.



**High Corrosion and Wear Resistance with
Multilayer Glass Lining (GL) Corrosion Resistant
Joints "K Black J" for Drainage and Ventilation
Piping**

• The surface of the cast iron joint is multilayer-processed at a high temperature with inorganic glass substance which is highly corrosion-resistant more than that of physicochemical glass. The hardness of the GL surface layer is 2.5 times the gray cast iron, and the wear resistance in case of cleaning is considerably improved because of its gradual curving alongside the joint body. The corrosion not only with high temperature effluent water but also with various detergents and disinfectants is prevented.



**Fusion of Persistence to Castings and Refined
Design Light Weight Cast Iron Pot "Ferramica"**

• Through adoption of tough ductile cast iron the weight minimization (wall thickness reduction) of approx. 40% without loss of strength could be realized. For useroriented development of products such as robust and light in weight, hence easy to handle, no rattling of the grip because of monolithic structure with the body, exquisite design etc., we are making the most of our techniques.

Company	ITO TEKKO CO., LTD.
Address	3-22-23 Motogo, Kawaguchi, Saitama 332-0011
URL	www.i-g-s.co.jp
Email	i-g-s@i-g-s.co.jp





SHIROTA CHUKO Co.,Ltd.

www.shirota-chuko.co.jp



Shirota Metal Casting Industry Co., Ltd is a company where all of our staff members shine brightly.

With a focus on metal casting for use in electronics, we manufacture casting for railroad cars, wind power generators, low-temperature mechanics, and speed reduction.

Through Japan's patented high quality metal casting technology, our company works to contribute to the customer satisfaction and prosperity all over the world!



Company	SHIROTA CHUKO Co., Ltd.
Address	1513hagasaki Kuwana, Mie 511-0944 Japan
URL	www.shirota-chuko.co.jp
Email	info@shirota-chuko.co.jp



KUSANO CO.,LTD.



KUSANO CO.,LTD.

www.kusanoco.com

Dalian Kusano

liaison office in Suzhou

Head Office

PT.KUSANO SANGYO INDONESIA

Company	KUSANO CO.,LTD.
Address	Kusano Bldg.,3-9-4 Ginza,Chuo-ku,Tokyo, Japan
URL	www.kusanoco.com
Email	info@kusano-s.co.jp



Since our foundation in 1914, we have been promoting business with main focus on casting industry. Out of variety of products line, we keep the top share of foundry pig iron in Japanese market place. Now, our field is expanding worldwide. Our goal is to be a reliable specialized trading company focusing on iron and steel.



New-Alloy Co., Ltd.

info@New-Alloy.com
www.new-alloy.com

Stop the Defects of Cast iron! It's Our mission! Total solution of Cast Iron!

The general manufacture of additives for cast iron

Graphite nodulariser, all kinds of inoculants, ferro alloys for additives, defects analysis, elemental analysis, research and development(R&D)

Factory



High frequency induction furnace
The furnace for experiments or melting on contract.
All kinds of analysis are available on the spot.



Cored Wire Manufacturing System
A variety of additives are available to put inside of the wire up to customers choice.



Products

- Cored Wire
- Nodularisers Inoculants
- All kinds of New-CR series Mg alloy
- Other additives for all kinds of cast iron
- Carbon Additives
- Crystal Graphite



The factory and research and development center of head office

Laboratory



FE-SEM+EDS+WDS

Technical supports
Please do not hesitate to ask anything about raw materials and additives for your cast iron or examination of them.

ICP-OES

Carbon/sulfur analyzer

Oxygen/Nitrogen/Hydrogen analyzer

Company	New-Alloy Co., Ltd.
Address	1,Shinnishihama-Cho,Toyohashi-City,Aichi-Pref.441-0153 Japan
URL	www.new-alloy.com
Email	info@New-Alloy.com

Raw Materials and Additives



OSAKA SPECIAL ALLOY Co.,LTD.



OSAKA SPECIAL ALLOY CO.,LTD.

info@otg.co.jp

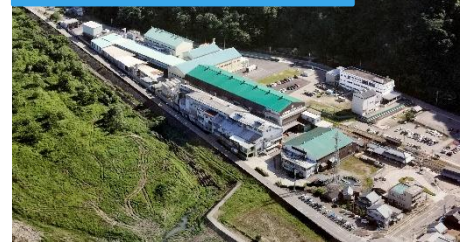
www.otg.co.jp/e-index.html

Nodularizers
Inoculants other alloys



Cored Wire

Main Factory in FUKUI



As a specialized manufacturer of additives for casting iron melt treatment, we have accumulated data on molten metal treatment technology under various conditions from various casting factories in Japan.

Based on this vast amount of data, we have developed melt processing additives tailored to the various needs of users and are currently in the top while maintaining the top share in Japan's casting industry.

Let's become a good partner of making the best casting under the backing up of the sales system that supports fine usage of high quality alloy manufactured in Japan.

We not only sell additives but also propose the optimum method and alloy composition for melt processing. Please feel free to contact us.

Company	OSAKA SPECIAL ALLOY CO.,LTD.
Address	Meiji Yasuda-Life Osaka Umeda Bldg 12F, 3-20,3-chome, Umeda, Kita-ku Osaka Japan
URL	www.otg.co.jp/e-index.html
Email	info@otg.co.jp

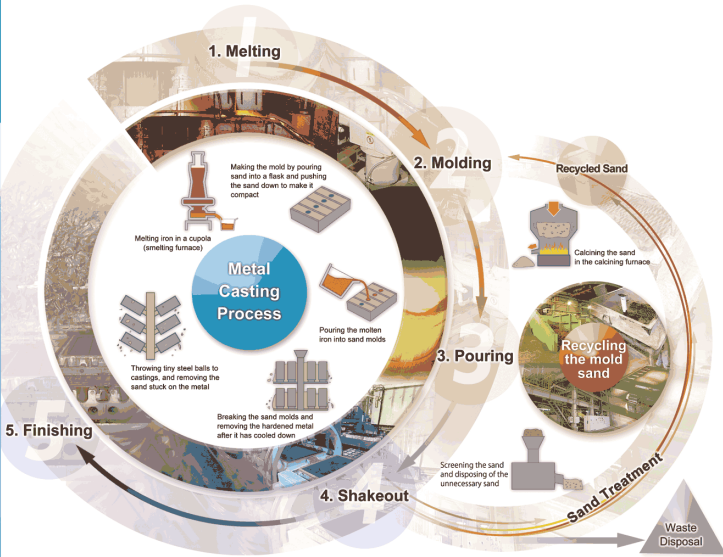
Raw Materials and Additives





We, Tsuchiyoshi Industry based in Japan are the trading company specialized foundry which are continually developing overseas markets. Business details are sales of silica sand, secondary materials, planning & installation of foundry machinery equipment, manufacturing shell cores, resin coated sand and consulting foundry engineering. On the other hand, we focus on environmental business like preventing noise pollutions, odious smells and others at foundry factories. We're still growing up with valued customers day by day to support and achieve their technology succession to the new generation which is available for us to take care of total supports of manufacturing, sales and engineering.

Products



- 1. Melting**
 - Refractory materials
Standard refractory brick (aluminosilicate, chamotte, Silicon Carbide, etc.), heat-resistant brick, graphite brick
 - Foundry coke
Impure coke, domestic coke, etc.
- 3. Pouring**
 - Molten metal additives
Lead, zinc, copper, aluminum, Silicon, Tin, barium, cerium, niobium, vanadium, etc.
 - Slag removers

- 2. Molding**
 - Foundry sand
AC3 (acid-resistant sand), dry silica sand (Yamato silica sand, Kawamura silica sand, imported sand), special sand (iron sand, chrome sand, Ceraclux[®], alumina sand, slag sand), etc.
 - Inorganic binders
Bentonite, sodium silicate, Sincalux[®], etc.
 - Organic binders
Furan resin, alkaline phenolic resin, phenolic urethane, etc.
 - Compounding agents
Coal powder, various types of ceramic starch, etc.
 - Coatings
For cast iron (silica-based, water-based), for cast steel (silica-based, water-based), for non-ferrous (zinc-based, etc.)
 - Mold release agents
For sand molds (oil-based, water-based), for die casting (oil-based, water-based), etc.
- 5. Finishing**
 - Abrasive materials
Silica sand, alumina, silicon carbide and grinding materials

Equipment

- Foundry machinery and in-plant equipment
Melting equipment (open hearth, electric induction, dry processing equipment, core manufacturing machinery, etc.)
- Molding equipment (hot-chamber die-casting machine, high-pressure machine, flask, core, sand rammer, etc.)
- Pouring equipment (hot-chamber die-casting machine, core rammer, etc.)
- Sand treatment equipment (sand rammer, etc.)
- Shakeout equipment (sand rammer, etc.)
- Finishing equipment (sand rammer, etc.)
- Environmental equipment
Dust collector, water purification unit, dust collector, sand disposal system

Company	TSUCHIYOSHI INDUSTRY CO.,LTD.
Address	9-9 HIRODEN MITSUISUMITOMOKAIJYO BUILDING 8TH FLOOR, NISHITOKAICHI-MACHI, NAKA-KU, HIROSHIMA-CITY 730-0806 JAPAN
URL	http://www.tyco.co.jp
Email	info@tyco.co.jp



Since our career starting in 1927 as the first manufacturer of foundry equipments and products in Japan, we have been doing our best to contribute to the development of the industry for more than 80 years. We owe the prosperity of this business to your support and really appreciate for it, we have been awarded as one of the leading companies in this field of industry in Japan as well as in the world. However we will never be satisfied with status quo and continue striving to widely contribute to the society.



Company	TAIYO MACHINERY Co., Ltd.
Address	4-1-7 TSURUMACHI, TAISHO-KU, OSAKA-SHI, OSAKA ,551-0023 Japan
URL	www.omco-taiyo.co.jp
Email	info@omco-taiyo.co.jp



Long-Arm(40T Mixer)

2PS(Reclamation)

Paramount(100T Mixer)





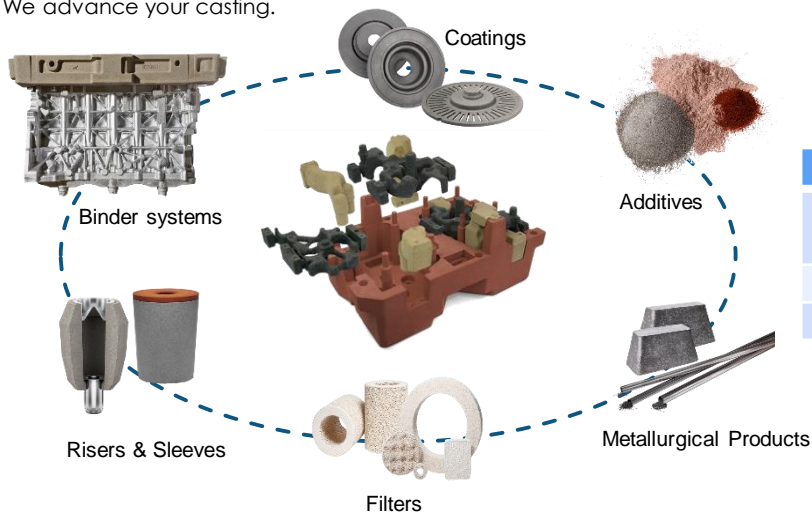
As Global Company: Global + Local Activity

Being a Bridge of Regional Solution, Cultural Approach with our High Performance Solution.

We support Japanese Foundry Manufactures with our Solutions as same as other regions, such as Europe, Americas, and Asia.

When developing any solution for our customers, we always keep a sharp eye on measurable returns that add value.

We provide premium products and services alongside technical application specialists – all of which reflects our distinct passion for quality and awareness towards environmental and safety issues. In this way, we actively carry-out our claim: We advance your casting.



Company	ASK Chemicals Japan Co., Ltd.
Address	8 th FL., Bashamichi 450 Bldg.50, Otamachi 4-Chome, Naka-Ku, Yokohama, 231-0011 Japan
URL	www.ask-chemicals.com
Email	info.japan@ask-chemicals.com



Japan Foundry Society



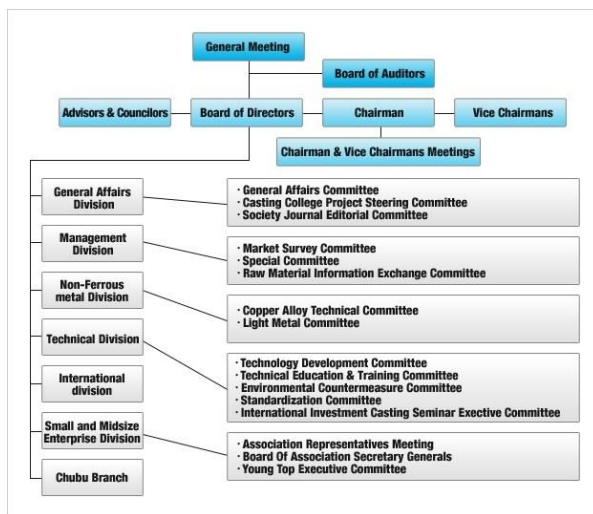
Association in July 2009, and was established as core of the casting industry in name and in reality, to enhance the quality of castings and promote the casting industry, thereby contributing to the development of the Japanese economy and upgrading the livelihood of its people.

To accomplish these objectives, the Society engages in studies and research, human resources development, the promotion of industrial safety and health, environmental conservation measures, training programs, the sponsoring of seminars and lecture and interchange and cooperation with casting-related organizations; both inside and outside Japan.

The casting industry has been regarded as a core industry that supports manufacturing in Japan. However, it is facing many problems, including international competition, that is intensifying year after year, as well as the surging prices of raw materials.

The Society has forged a casting industry vision and is tackling reform of the casting industry to ensure its evolution as an industry that continues to support manufacturing a decade on.

www.foundry.jp

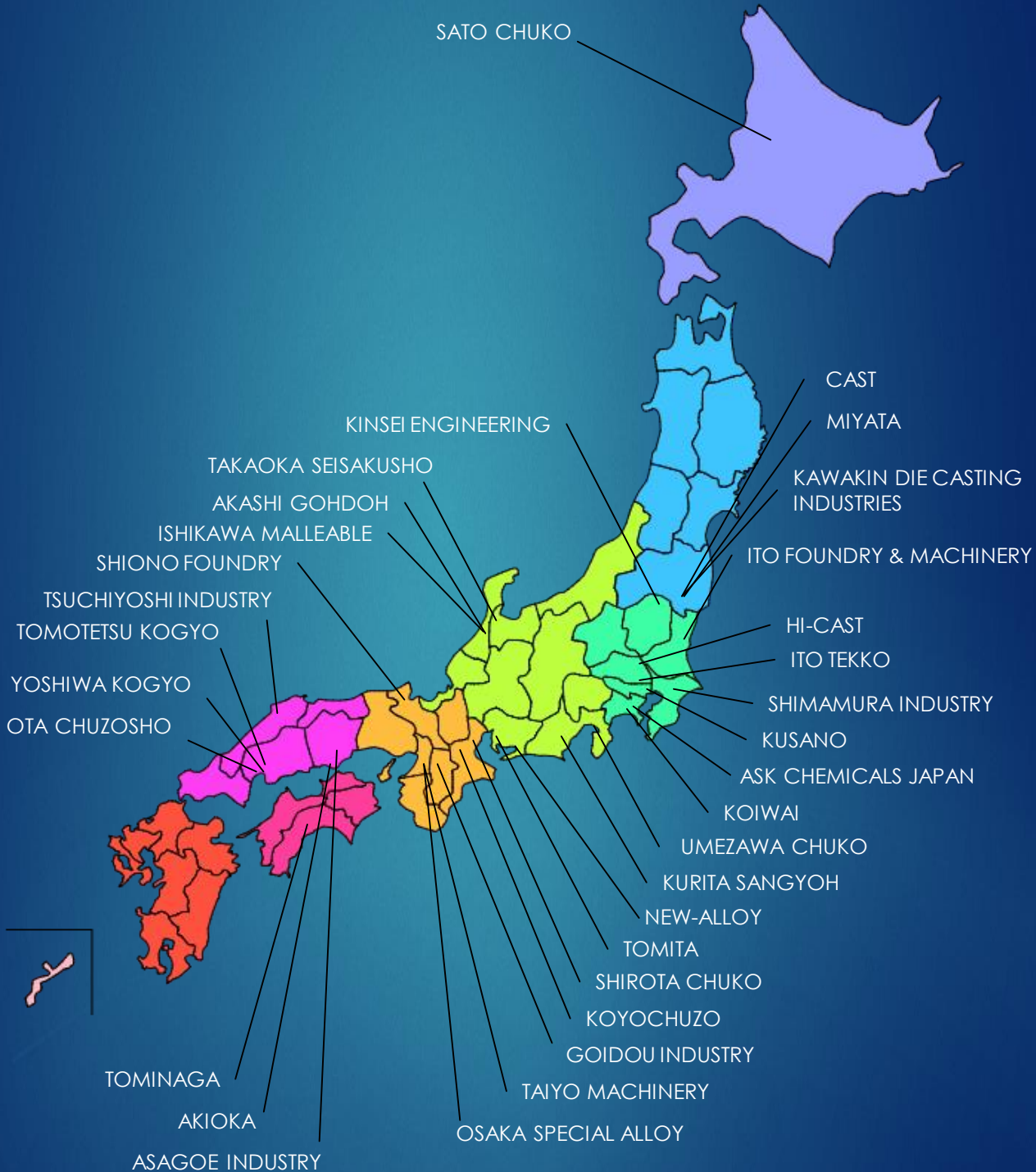


Company	Japan Foundry Society
Address	Room 501, Kikai-Shinko-Kaikan, 3-5-8, Shiba-Koen, Minato-ku, Tokyo 105-0011, Japan
URL	www.foundry.jp
Email	info@foundry.jp

Companies Location

Giving Innovations to the world, The Leading Japan Foundries.

www.japan-foundries.com



Giving Innovation to the world,

THE LEADING JAPAN FOUNDRIES

www.japan-foundries.com



www.japan-foundries.com

www.japan-foundries.com

info@japan-foundries.com



www.japan-foundries.com



<p>Automobile</p> 	<p>General Industrial Machinery</p> 	<p>Construction Machines</p> 	<p>Robot</p> 	<p>Ship</p> 
<p>Utility Infrastructure</p> 	<p>Others</p> 	<p>Raw Materials and Additives</p> 	<p>Equipment etc.</p> 	

info@japan-foundries.com